

Frequently asked questions:

FEDA -
Sustaining our livelihood and Environment

What are the rights and benefits of members?

1. Attend General Assembly of members meetings
2. Vote and participate in decision making
3. Be elected to management and other positions in the Association
4. Access to and use of FEDA facilities and resources
5. Benefit from capacity building and other training opportunities (short training courses, workshops/ conferences, internship, research etc)
6. Employment and other income generating opportunities
7. Social (expanded network of friends and institutions)

What are the roles and responsibilities of members?

1. Respect decisions taken by the General Assembly of members and other appropriate organs of the Association.
2. Pay annual membership fees regularly.
3. Participate and/or support FEDA activities
4. Raise funds for FEDA
5. Disseminate information to promote the FEDA "brand"

Who is a benefactor?

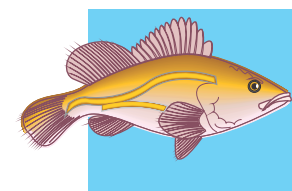
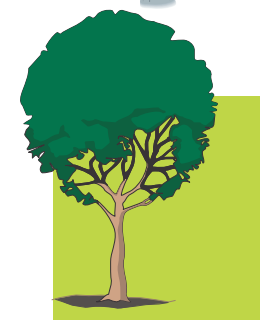
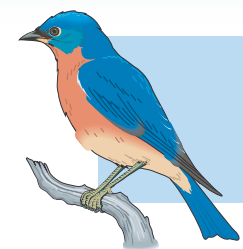
A benefactor is a member or non-member who has provided unrestricted financial and/or material support to FEDA.

What makes FEDA unique?

1. Good governance and transparency
2. Probity and accountability
3. People centered
4. Participatory approach
5. Equity and gender sensitivity



"Who we are and what we do"



Contact Information:

FOOD AND ENVIRONMENT
DEVELOPMENT ASSOCIATION (FEDA)

c/o IRAD Batoke, Limbe
P.O. Box 495
Limbe, SW Region, Cameroon

Email: feda.29112010@gmail.com
Telephone: + 237 77233321/94392146

Registration No: 805/G37/D14/1/VOL/1/BAPP of 29.11.2010

FOOD AND ENVIRONMENT DEVELOPMENT ASSOCIATION



How we work

OUR ENVIRONMENT IS THE SOURCE OF OUR LIVELIHOOD

The importance of the environment for our livelihood cannot be overemphasized. In Africa, 70% of the population depends on agriculture for their subsistence. Over two thirds of the 600 million people rely directly or indirectly on forest and the environment for their livelihoods (food, medicine, water, houses). Wood is the primary source of energy for at least 70% of households. Resources from the environment (timber, minerals, oil, fish etc) contribute to Gross Domestic product in many countries. In addition, forests fulfill many important ecological functions (watershed, habitat to many plants, animals, fish, carbon sequestration etc). It is therefore logical that any effort to increase and/or sustain the economy, food and agricultural production for our livelihood must take into consideration the impact on the environment from which these resources are derived.



What is FEDA?

The Food and Environment Development Association (FEDA) is a non-governmental, non-political and non-profit membership Association that works to ensure food production and agricultural needs are achieved through wise use and sustainable management of the environment.

Our Mission?

The Food and Environment Development Association strives to promote and enhance food production and agricultural techniques that are environmentally friendly so as to conserve biodiversity and sustain the capacity of the environment to meet the needs of the present and future generations in perpetuity.



Our Objectives

- Research to improve knowledge and techniques for increased food production and improve environmental conservation and management.
- Educate and raise awareness (with focus on local communities) on innovative techniques for enhanced food production, wise use of biodiversity and environment conservation and management.
- Promote food and agricultural production and the conservation of biodiversity and sustainable development of the environment.
- Develop and put in place mechanisms for the sustainability of the Association and its members.

How we work

The main governance organs of FEDA, (General Assembly of members, Executive Board and Secretariat) and their functions are presented in figure 1.

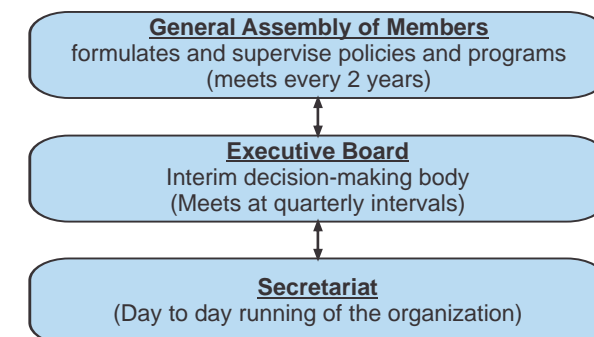


Figure1: Three main governance organs of FEDA and their key functions.

How to become a member of FEDA

Fill out a membership registration form and return to FEDA with corresponding registration fees. Membership forms can be collected from the FEDA office or requested via email. Completed forms should be submitted with a passport size photo (hard or soft copy) for the establishment of your membership card.

How you can support FEDA

- Become member (see procedure above)
- Become a benefactor (see definition below)
- Work as a volunteer
- Promote the FEDA "brand"

Who can become a FEDA member?

Anybody above 15 years can register and become a member of FEDA.

Who is a member of FEDA?

A FEDA member is a person (physical or moral) who is duly registered and pays his/he annual membership fees regularly.